



AT&T SECURE EMAIL GATEWAY SERVICE

VIRUS SCANNING

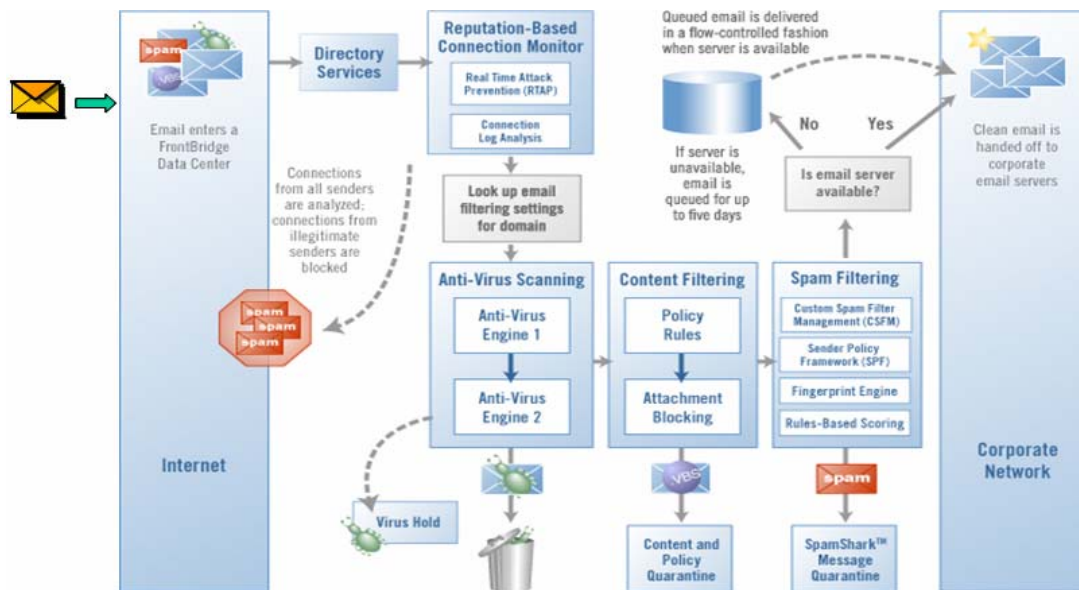
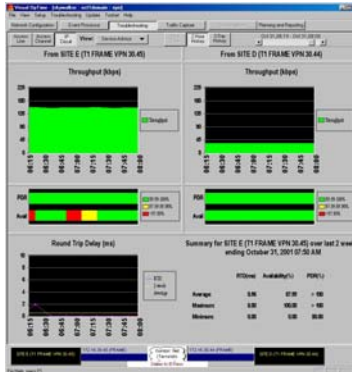
KEEP UNWANTED VIRUSES, WORMS, TROJAN HORSES OR OTHER TYPES OF "MALWARE" OFF YOUR CORPORATE NETWORK.

SPAM FILTERING

UNIQUE PROTECTIVE AND PREVENTIVE COUNTERMEASURES FILTER MORE THAN 95% OF SPAM

DISASTER RECOVERY

MESSAGE STORE AND FORWARD SERVICE WILL STORE UNDELIVERABLE MESSAGES THAT OTHER PROVIDERS MAY SIMPLY LOSE SHOULD INTERNAL SYSTEM FAIL. AUTOMATIC FLOW-CONTROLLED DELIVERY OF STORED MAIL ONCE INTERNAL SYSTEM IS RESTORED.



PRICING INFORMATION (BASED ON 36 MONTH TERM)

FULL GATEWAY SERVICE - IN & OUT		MESSAGE ARCHIVE SERVICE	HISTORICAL DATA ARCHIVE PROCESSING
SEAT COUNT	MRC PER SEAT	\$6.95 PER GB MRC MINIMUM 2GB = \$13.90	<2GB \$5.55
<250	\$3.05		
251 - 500	\$2.55		
501 - 750	\$2.30		
751 - 1,000	\$2.10		
1,001 - 1,500	\$2.00		
1,501 - 2,000	\$1.85		
2,001 - 2,500	\$1.70		
		SETUP ONE-TIME FEE FOR:	
		1 - 50 MAILBOXES - \$3,000	
		51 - 500 MAILBOXES - \$5,000	
		501 - 1000 MAILBOXES - \$6,000	
		1,001 AND ABOVE MAILBOXES - \$7,500	



2,501 - 5,000	\$1.55		
5,001 - 7,500	\$1.45		
7,501 - 10,000	\$1.30		
SETUP FEES PER DOMAIN	NRC \$250	ADDITIONAL DOMAIN FEE: \$290	